

У складному багаторічному процесі навчання гри на фортепіано дуже важливу роль відіграють перші роки занять музикою.

У цьому підручнику я намагався показати своє бачення методики і програми занять з учнями-піаністами протягом перших трьох років навчання.

Навчальний матеріал у посібнику впорядкований у порядку зростання складності. Крім популярного класичного педагогічного репертуару використано багато українських народних мелодій, християнських псалмів, пісень і танців інших народів, аранжованих мною.

Твори, подані в кінці збірника, можуть виконуватись найздібнішими учнями протягом перших трьох років навчання, або ж у наступних класах. Вправи, авторство яких не вказано, написані мною.

Успіхів вам, шановні учні та педагоги!

*Юрій Гелетюк.*

# Перша частина

## Вправи для гри правою рукою

Скрипковий ключ. Четвертні ноти.

Перша октава: До, Ре, Мі.

1. 

2. 

3. 

До, Ре, Мі, Фа.

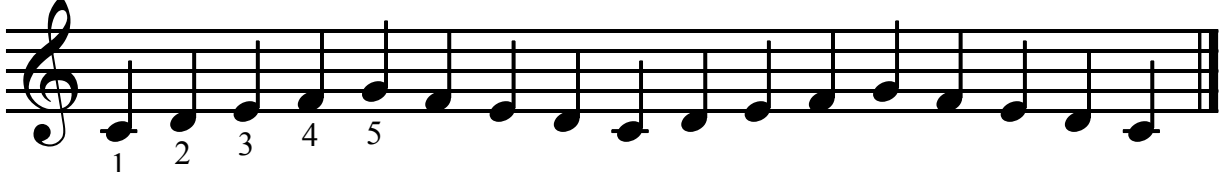
4. 

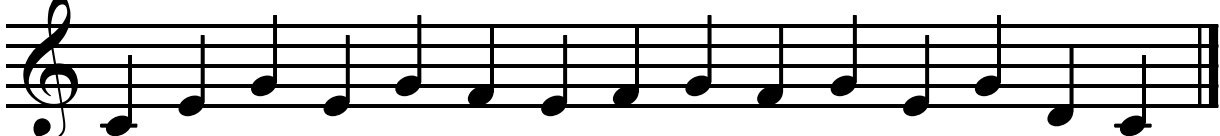
5. 

6. 

До, Ре, Мі, Фа, Соль.

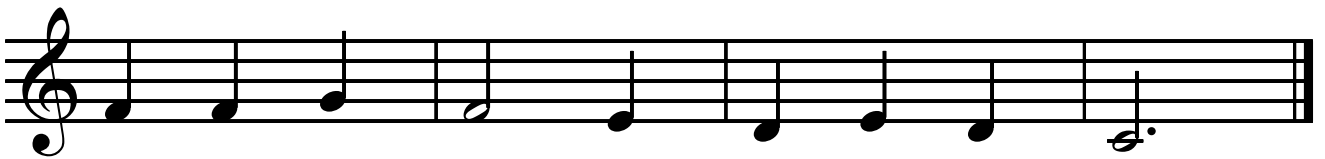
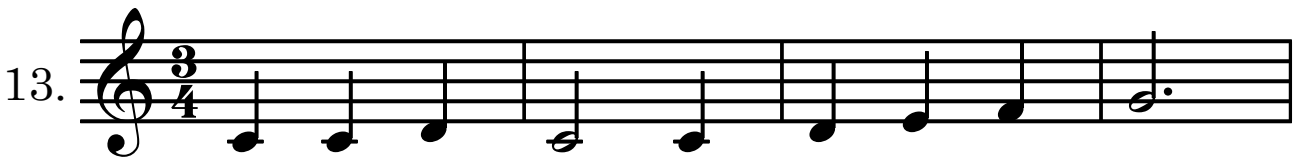
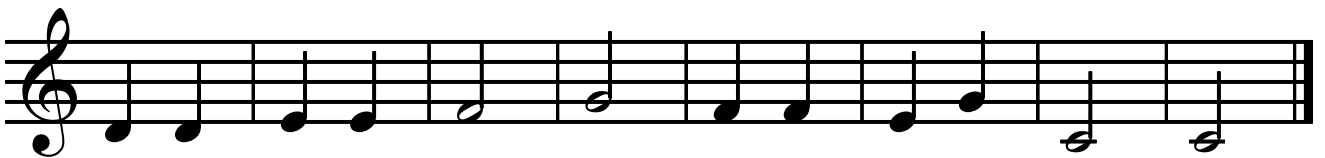
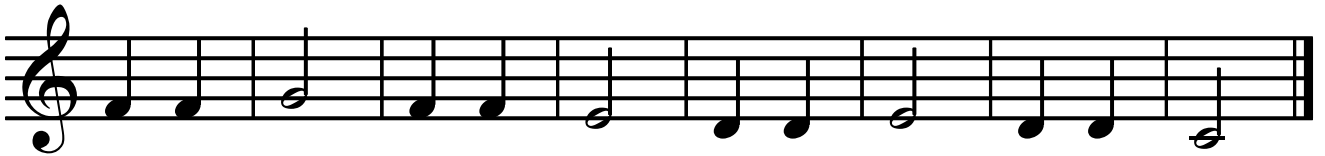
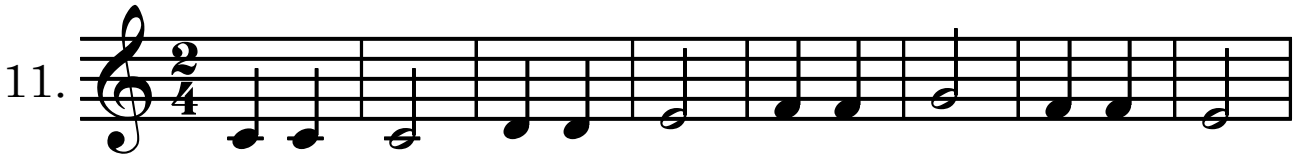
Кожен палець грає свою ноту.

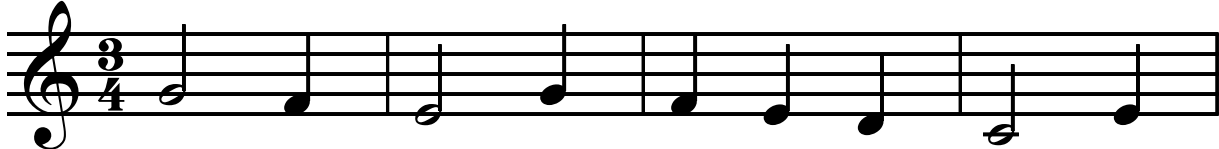
7. 

8. 

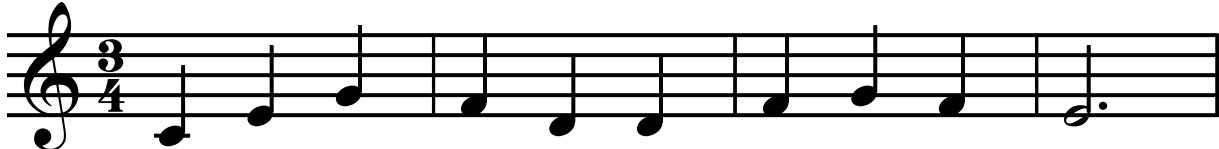


Тривалість нот: Половинні ноти.  $\frac{2,3,4}{4,4,4}$   
Половинні ноти з крапкою. Цілі ноти. Розмір:

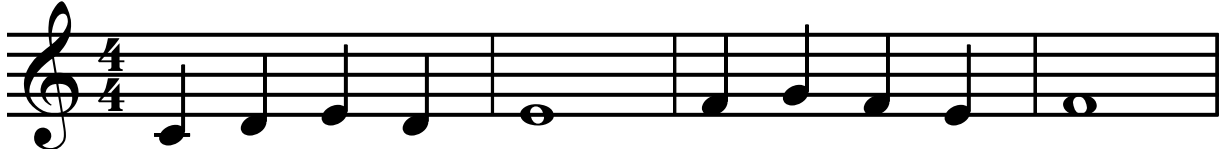


14. 



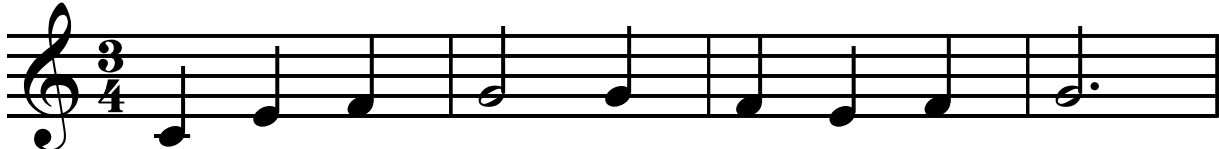
15. 




16. 



Реприза.

17. 



## Вправи для гри лівою рукою

Басовий ключ.

Мала октава: ноти До, Ре, Мі, Фа, Соль.

18. 




19. 



## Гра обома руками разом

Аколада.

20. 



Вольти.

### Весела мелодія

21.

Musical score for exercise 21, 'Весела мелодія'. It is in 4/4 time. The right hand (treble clef) plays a melody of eighth notes: G4, A4, B4, C5, B4, A4, G4, F4, E4, D4, C4. The left hand (bass clef) plays a simple accompaniment of half notes: C3, F2, C3, F2, C3, F2, C3, F2. The piece has two endings: the first ending is a repeat sign followed by a double bar line, and the second ending is a repeat sign followed by a double bar line.

### Крок за кроком

22.

Musical score for exercise 22, 'Крок за кроком'. It is in 4/4 time. The right hand (treble clef) plays a melody of quarter notes: G4, A4, B4, C5, B4, A4, G4, F4, E4, D4, C4. The left hand (bass clef) plays a simple accompaniment of half notes: C3, F2, C3, F2, C3, F2, C3, F2.

Musical score for exercise 23, 'В темпі вальсу'. It is in 3/4 time. The right hand (treble clef) plays a melody of quarter notes: G4, A4, B4, C5, B4, A4, G4, F4, E4, D4, C4. The left hand (bass clef) plays a simple accompaniment of half notes: C3, F2, C3, F2, C3, F2, C3, F2.

### В темпі вальсу

23.

Musical score for exercise 23, 'В темпі вальсу'. It is in 3/4 time. The right hand (treble clef) plays a melody of quarter notes: G4, A4, B4, C5, B4, A4, G4, F4, E4, D4, C4. The left hand (bass clef) plays a simple accompaniment of half notes: C3, F2, C3, F2, C3, F2, C3, F2.

Musical score for exercise 24, 'В темпі вальсу'. It is in 3/4 time. The right hand (treble clef) plays a melody of quarter notes: G4, A4, B4, C5, B4, A4, G4, F4, E4, D4, C4. The left hand (bass clef) plays a simple accompaniment of half notes: C3, F2, C3, F2, C3, F2, C3, F2.

Граємо 2 і 3 ноти одночасно.

24.

Musical notation for exercise 24, measures 1-4. The piece is in 4/4 time. The right hand (treble clef) plays a sequence of notes: G4 (quarter), A4 (quarter), B4 (quarter), C5 (quarter), D5 (quarter), E5 (quarter), F5 (quarter), G5 (quarter). The left hand (bass clef) plays: G3 (half), A3 (half), B3 (half), C4 (quarter), D4 (quarter), E4 (quarter), F4 (quarter), G4 (quarter).

Musical notation for exercise 24, measures 5-8. The right hand (treble clef) plays: A4 (quarter), B4 (quarter), C5 (quarter), D5 (quarter), E5 (quarter), F5 (quarter), G5 (quarter), A5 (quarter). The left hand (bass clef) plays: G3 (half), A3 (half), B3 (half), C4 (quarter), D4 (quarter), E4 (quarter), F4 (quarter), G4 (quarter).

25.

Musical notation for exercise 25, measures 1-4. The piece is in 4/4 time. The right hand (treble clef) plays: G4 (quarter), A4 (quarter), B4 (quarter), C5 (quarter), D5 (quarter), E5 (quarter), F5 (quarter), G5 (quarter). The left hand (bass clef) plays: G3 (quarter), A3 (quarter), B3 (quarter), C4 (quarter), D4 (quarter), E4 (quarter), F4 (quarter), G4 (quarter).

Musical notation for exercise 25, measures 5-8. The right hand (treble clef) plays: A4 (quarter), B4 (quarter), C5 (quarter), D5 (quarter), E5 (quarter), F5 (quarter), G5 (quarter), A5 (quarter). The left hand (bass clef) plays: G3 (quarter), A3 (quarter), B3 (quarter), C4 (quarter), D4 (quarter), E4 (quarter), F4 (quarter), G4 (quarter).

**Аплікатура.**

Добавляємо зверху ноту Ля, внизу ноту Сі.

26.

1 3 5 1 3 5 5 3 1 5 2 1

1 4 5 1 3 5 1 5 3 1 5

**Акорди.**

**Четвертні паузи.**

27.

5 3 1 5 3 1 5 3 1 5 3 1 1 3 5 1 2 5 1 2 5

5 4 1 1 1 1 1 1 1



# Марш

Половинні паузи.

Ю. Гелетюк

28.

1  
3 5

1 2 3 5

Галя по садочку ходила  
Дитяча пісенька

29.

2 3 4 5 4 2 3 4 5 4

2 4 3 4 5 4 2 4 3 4 5 4

5 4 3 4 5 4 5 4 3 4 5 4

Old Woman  
Американська пісенька

30.

1 3 5 1 2 5

1 3 5 1 2 5

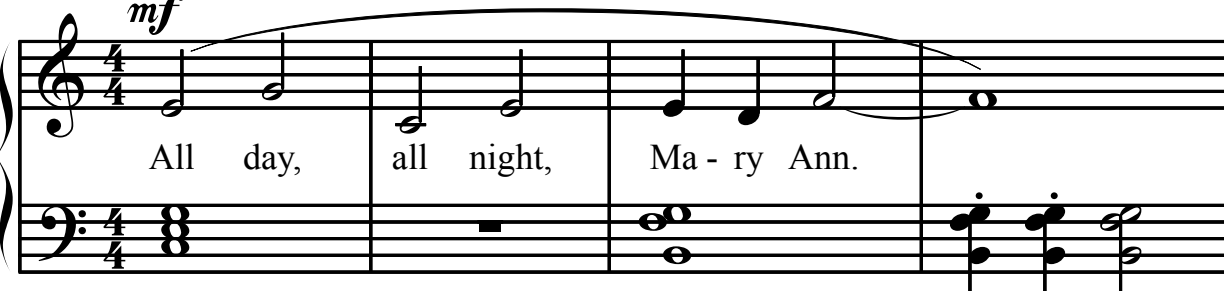
Ліра. Легато - 

# Mary Ann

Американська пісня

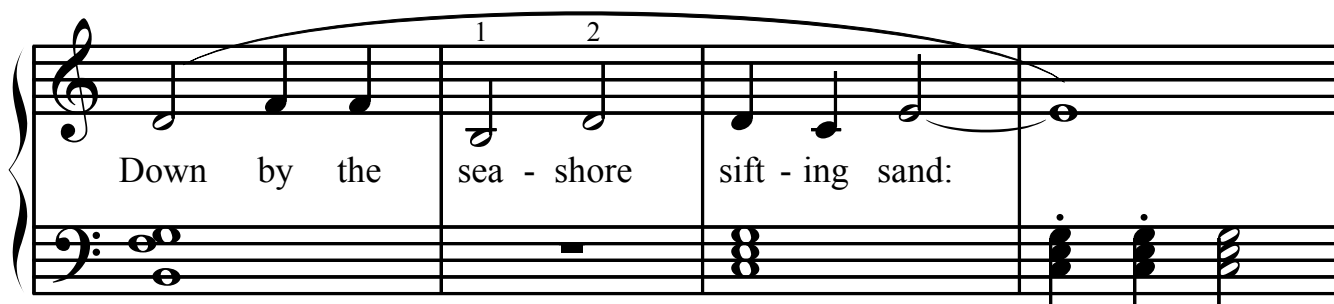
Moderato  
*mf*

31.



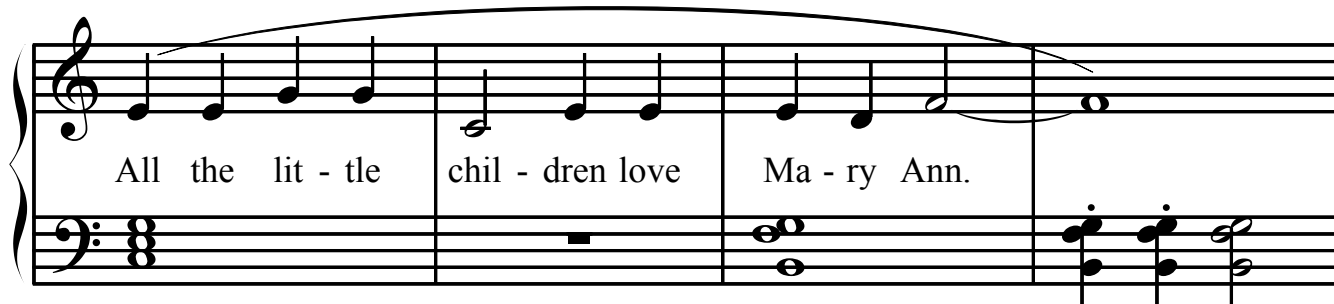
All day, all night, Ma - ry Ann.

Detailed description: This system contains the first four measures of the song. The treble clef staff has a 4/4 time signature and a melodic line starting on G4. The bass clef staff has a 4/4 time signature and a bass line starting on G2. The lyrics are 'All day, all night, Ma - ry Ann.' The first measure is 'All day,', the second is 'all night,', and the third and fourth are 'Ma - ry Ann.' with a fermata over the final note.



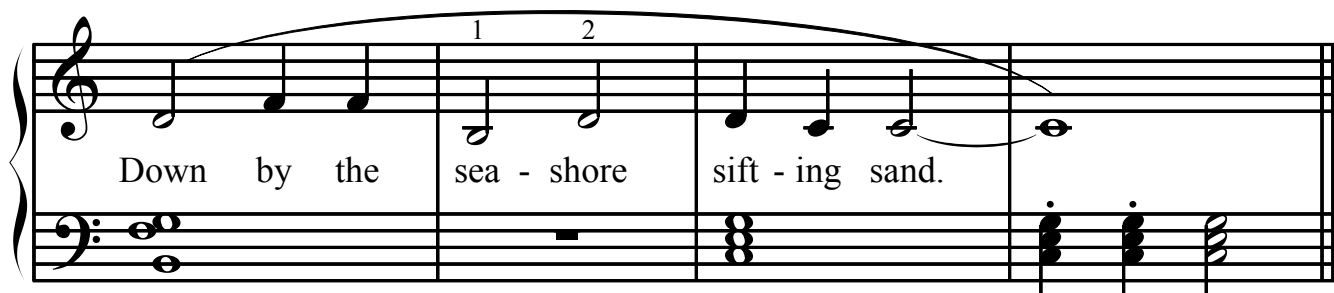
Down by the sea - shore sift - ing sand:

Detailed description: This system contains measures 5-8. The treble clef staff continues the melody with notes G4, A4, B4, C5, and a fermata. The bass clef staff has a bass line with notes G2, A2, B2, C3, and a fermata. The lyrics are 'Down by the sea - shore sift - ing sand:'. The first measure is 'Down by the', the second is 'sea - shore', and the third and fourth are 'sift - ing sand:'. There are fingerings '1' and '2' above the notes in the second measure.



All the lit - tle chil - dren love Ma - ry Ann.

Detailed description: This system contains measures 9-12. The treble clef staff continues the melody with notes D5, C5, B4, A4, and a fermata. The bass clef staff has a bass line with notes G2, A2, B2, C3, and a fermata. The lyrics are 'All the lit - tle chil - dren love Ma - ry Ann.' The first measure is 'All the lit - tle', the second is 'chil - dren love', and the third and fourth are 'Ma - ry Ann.' with a fermata over the final note.



Down by the sea - shore sift - ing sand.

Detailed description: This system contains measures 13-16. The treble clef staff continues the melody with notes G4, A4, B4, C5, and a fermata. The bass clef staff has a bass line with notes G2, A2, B2, C3, and a fermata. The lyrics are 'Down by the sea - shore sift - ing sand.'. The first measure is 'Down by the', the second is 'sea - shore', and the third and fourth are 'sift - ing sand.'. There are fingerings '1' and '2' above the notes in the second measure.

# По всьому світу

Українська колядка

Sostenuto

32. *mf*

5 3 2 1 2 3 4 5

4 1 5 4 1

5 3 2 1 2 3 4 5

4 1 5

5

2 1 5 1

1. 2.

5 1 5 4