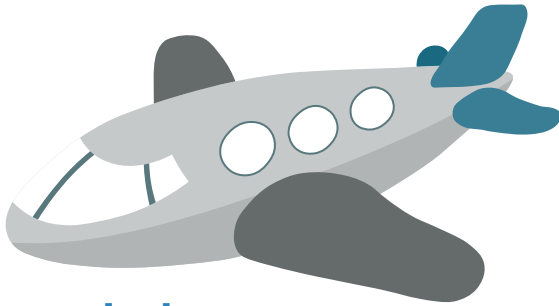


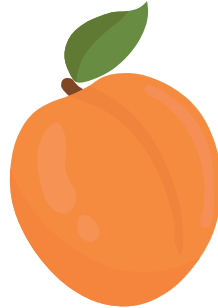
Aa



alligator



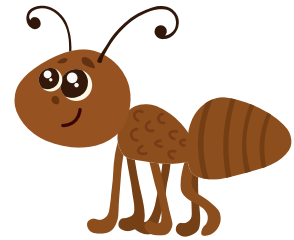
airplane



apricot



acorn



ant



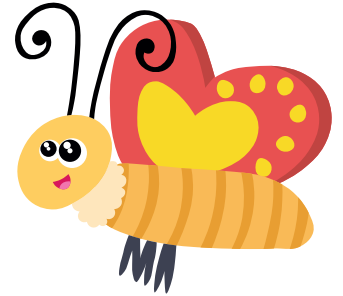
apple



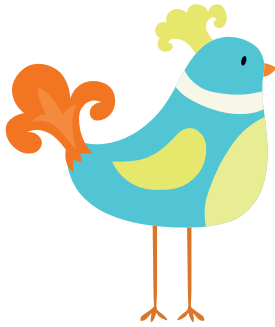
Bb



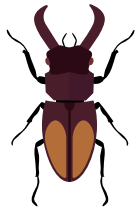
banana



butterfly



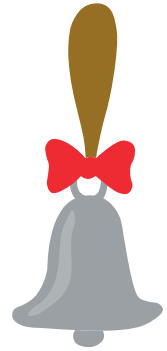
bird



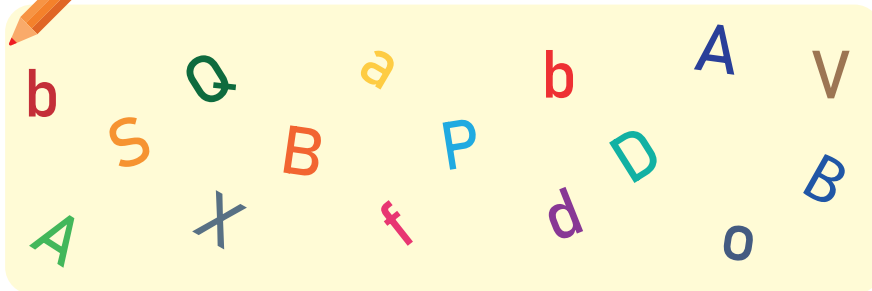
beetle



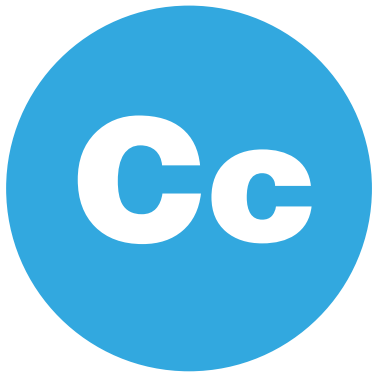
bear



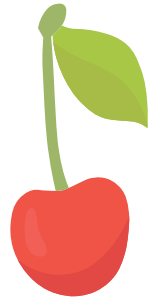
bell



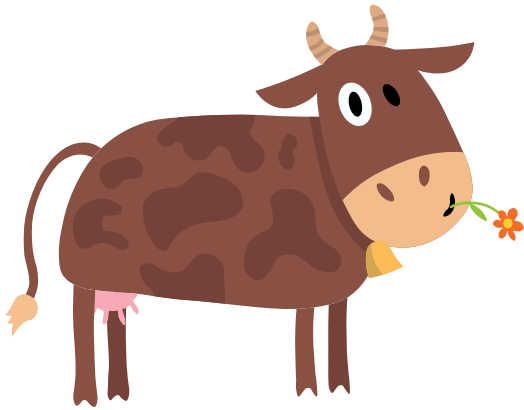
bee



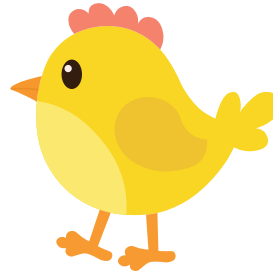
crab



cherry



cow



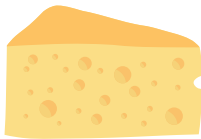
chick



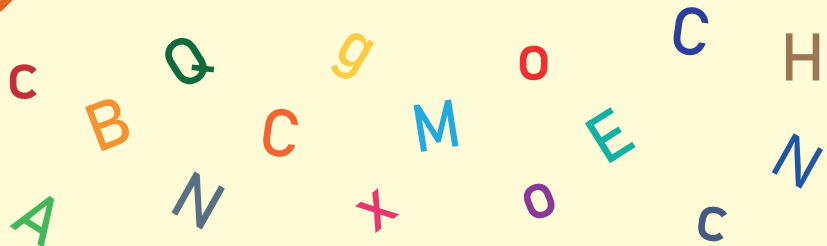
corn



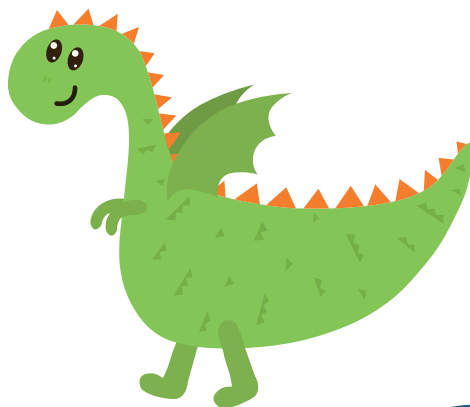
cake



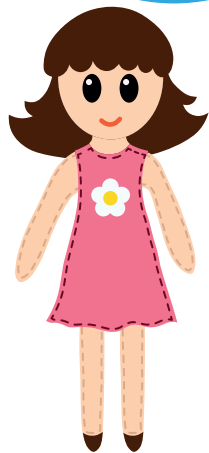
cheese



Dd



dragon



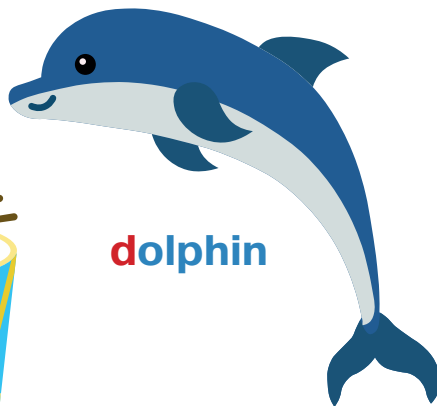
doll



donut



drum



dolphin



A yellow rectangular box containing various letters for a word search. The letters are: y, S, Q, a, S, A, D, d, X, D, P, m, d, D, B, n.



duck