

I. LISTENING

TEST 1

Task 1

Listen to the speakers. For questions (1-6) choose the correct answer (A, B or C). Write your answers on the separate answer sheet. You will listen to each recording twice.

1. What is today's special at the restaurant?

A



B



C



2. What would the customer probably drink?

A



B



C



3. How much does the food cost?

A



B



C



4. What is the guest enquiring about?

A

the free things in the hotel

B

restroom

C

swimming pool

5. Has the guest used up all the trinkets in his room?

A

yes

B

no

C

not all

6. How do the hotel staff react?

A

They refuse to supply the guest with more soap and shampoo.

B

They agree to bring the guest a basketful of amenities.

C

Housekeeping will deliver all the amenities the guest likes.

Task 2

Listen to the text. For statements (7-11) choose T if the statement is true according to the text, F if it is false. Write your answers on the separate answer sheet. You will listen to the text twice.

- Martina has fewer Italian friends than English friends.
- Harry gets annoyed when Martina speaks Italian to her family in front of him.
- Martina promised Jessie that she would speak English with her friends next time.
- Jessie agrees that it was a mistake to argue with Martina.
- Jessie would like to be friends with the Italians.

Task 3

Listen to the text. For questions (12-16) choose the correct answer (A, B or C). Write your answers on the separate answer sheet. You will listen to the text twice.

- 12. The country is washed by
 A the River Tagus B the Atlantic Ocean C the Mediterranean Sea
- 13. Portugal is Europe's ... nation.
 A youngest B newborn C most ancient
- 14. The towns in Portugal are
 A noisy B captured C charming
- 15. The people in Portugal
 A are indifferent B think positively C always sing and dance
- 16. Portugal is the country that
 A sends people to festivals abroad
 B organizes a lot of festivals
 C cooperates with other countries

TEST 2

Task 1

Listen to the speakers. For questions (1-6) choose the correct answer (A, B or C). Write your answers on the separate answer sheet. You will listen to each recording twice.

1. How long has the patient had a cough?

A

Sunday	Monday	Tuesday	Wednesday	Thursday	Friday	Saturday
1	2	3	4	5	6	7
8	9	10	11	12	13	14
15	16	17	18	19	20	21
22	23	24	25	26	27	28
29	30	31				

 B

Sunday	Monday	Tuesday	Wednesday	Thursday	Friday	Saturday
1	2	3	4	5	6	7
8	9	10	11	12	13	14
15	16	17	18	19	20	21
22	23	24	25	26	27	28
29	30	31				

 C

Sunday	Monday	Tuesday	Wednesday	Thursday	Friday	Saturday
1	2	3	4	5	6	7
8	9	10	11	12	13	14
15	16	17	18	19	20	21
22	23	24	25	26	27	28
29	30	31				

2. What health problem does he also have?

A  B  C 

3. How many cigarettes a day does he smoke?

A  B  C 

4. When did the patient last come in for a physical exam?

- A Last month B Last year C Two years ago

5. Does the patient take up sports?

A Not really

B Every day

C Often

6. During the examination the patient ...

A has a cold

B feels a cold touch

C has a fever

Task 2

Listen to the text. For statements (7-11) choose T if the statement is true according to the text, F if it is false. Write your answers on the separate answer sheet. You will listen to the text twice.

7. James is pleased about his parents' plan.

8. Mani knows where James's parents work.

9. Mani thinks James may be able to benefit from the situation.

10. James's parents have recently offered to buy him a motorbike.

11. James's mother believes James is very sensible for his age.

Task 3

Listen to the text. For questions (12-16) choose the correct answer (A, B, or C). Write your answers on the separate answer sheet. You will listen to the text twice.

12. What is the conversation mostly about?

A caravanning

B vacations in the mountains

C camping outdoors

13. What is one of the reasons why Fred likes caravanning more than camping?

A He can watch TV during trips.

B He doesn't have to worry about insects.

C He can bring more stuff.

14. What does Angela's caravan NOT have?

A TV

B computer

C shower

15. Where will Angela's family spend their summer vacations?

A on the beach

B in the mountains

C in the park

16. What can be inferred from the conversation?

A Angela has a bigger family than Fred.

B Fred has a bigger family than Angela.

C Angela's and Fred's families are the same size.

TEST 3

Task 1

Listen to the speakers. For questions (1-6) choose the correct answer (A, B or C). Write your answers on the separate answer sheet. You will listen to each recording twice.

1. The patient wants to make an appointment to the ...

A



B



C

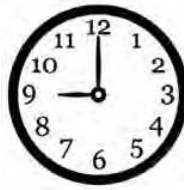


2. There's a slot available at ... next Monday.

A



B



C



3. The patient is going to see the doctor

A



B



C



4. The patient is calling the

A dentist's office

B eye specialist

C ambulance

5. The patient has been to Dr Lee

A once

B several times

C many times

6. The patient will see the doctor

A on Friday morning

B on Tuesday morning

C on Thursday afternoon

Task 2

Listen to the text. For statements (7-11) choose T if the statement is true according to the text, F if it is false. Write your answers on the separate answer sheet. You will listen to the text twice.

7. It's surprising to see the travellers on the underground using smartphones.
8. The commuters are all concentrating hard on their smartphones.
9. The telephone changed significantly in the twentieth century.
10. The telephone has the same features as most modern smartphones.
11. The telephone helped us communicate with people who were far away.

Task 3

Listen to the text. For questions (12-16) choose the correct answer (A, B or C). Write your answers on the separate answer sheet. You will listen to the text twice.

12. What is the length of the cruise?

A one day B three days C five days
13. When will they depart?

A at 3 p.m. B at 5 p.m. C at 2 p.m.
14. What is mandatory?

A emergency drill B fitness drill C excursion lists
15. What should be reserved?

A dinners B excursions C information booklets
16. What kind of payments is NOT acceptable?

A cash B credit cards C traveller's cheques

TEST 4**Task 1**

Listen to the speakers. For questions (1-6) choose the correct answer (A, B or C). Write your answers on the separate answer sheet. You will listen to each recording twice.

1. First the security officer would like to see the

 A B C

2. Something is wrong when the passenger is

 A B C

3. What causes the problem?

 A B C

4. What does the customs officer want to see before the passenger gets on the plane?

 A a boarding pass B a bag C an ID

5. The passenger doesn't have to declare ... he's carrying.

 A cash B alcohol C luggage

6. What is not allowed?

 A food B clothes C two bottles of whiskey**Task 2**

Listen to the text. For statements (7-11) choose T if the statement is true according to the text, F if it is false. Write your answers on the separate answer sheet. You will listen to the text twice.

7. All world music festivals are held in the UK.
8. Music festivals help people avoid routine.
9. The festivals require lots of prior preparation.
10. The Glastonbury Festival has been organized for almost fifty years.
11. The first Glastonbury Festival was free of charge.

Task 3

Listen to the text. For questions (12–16) choose the correct answer (A, B or C). Write your answers on the separate answer sheet. You will listen to the text twice.

12. What is the most dangerous place on the Earth?
 A the part of the Sahara Desert B the part of Egypt C the part of Morocco
13. What is described as ferocious?
 A paleontologists B researchers C predators
14. How much larger were the fish mentioned in the article than today's fish?
 A many times B 100% C 4 or 5 times
15. What did the fish have that were fearsome?
 A eyes B teeth C jaws
16. Why is the study useful?
 A It reveals the hidden treasures.
 B It helps in studying dinosaurs.
 C It helps to travel in Africa.

TEST 5

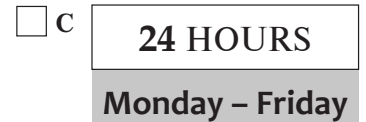
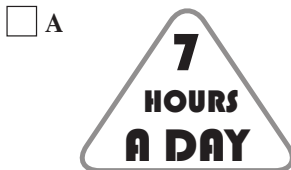
Task 1

Listen to the speakers. For questions (1–6) choose the correct answer (A, B or C). Write your answers on the separate answer sheet. You will listen to each recording twice.

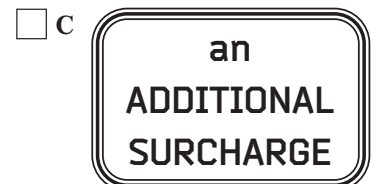
1. What is the conversation mainly about?



2. When do people train in the gym?



3. How much do the guests have to pay for using the gym?



4. What is true about the hotel's facilities?

- A They have a full-sized swimming pool.
 B They have a treadmill.
 C They don't have a big swimming pool.

5. Who has free access to the swim stations?

- A all visitors B nobody C the registered guests

6. What are the swim stations working hours?

- A 24/7 B 10 hours a day C 15 hours a day

Task 2

Listen to the text. For statements (7-11) choose T if the statement is true according to the text, F if it is false. Write your answers on the separate answer sheet. You will listen to the text twice.

7. You can buy various antiques at Brinkley's.
8. Brinkley's is having three interesting collections on sale today.
9. 'Poppies Blooming' by Claude Monet depicts members of his family.
10. Andy Warhol's painting is worth 32 soup cans.
11. You can ask for a refund in case you don't like the painting.

Task 3

Listen to the text. For questions (12-16) choose the correct answer (A, B or C). Write your answers on the separate answer sheet. You will listen to the text twice.

12. How much did the man lift?

- A 510 kg B 500 kg C 501 kg

13. Where did the man break the record?

- A Iceland B Ireland C England

14. How did the man feel about his achievement?

- A exhausted B exhilarated C strained

15. What is the man's nickname?

- A the Iceberg B Man Mountain C Mr Muscle

16. What is NOT true about Hafthor Bjornsson?

- A He is an actor. B He is a powerlifter. C He is a sports broadcaster.

TEST 6**Task 1**

Listen to the speakers. For questions (1-6) choose the correct answer (A, B or C). Write your answers on the separate answer sheet. You will listen to each recording twice.

1. What do they order?

 A

 B

 C


2. What does the waitperson recommend?

 A

 B

 C


3. What drink does Alice order?

 A

 B

 C


4. The man is asking the concierge ...

 A for ordering dinner

 B the way to the café

 C for restaurant advice

5. The concierge recommends a meal in the ...

 A three-star restaurant

 B four-star restaurant

 C café nearby

6. The guest prefers to have dinner ...

 A in the hotel he stays in

 B in a different place

 C far from the hotel
Task 2

Listen to the text. For statements (7-11) choose T if the statement is true according to the text, F if it is false. Write your answers on the separate answer sheet. You will listen to the text twice.

7. People are asked to scream in all Japanese amusement parks.
8. Japan said companies should be ready for the “new normal” Covid-19 life.
9. Scientists are sure that screaming or singing can spread the virus.
10. Amusement park guidelines suggest that visitors should be quiet on rides.
11. The guidelines say staff dressed as mascots can high-five visitors.

Task 3

Listen to the text. For questions (12–16) choose the correct answer (A, B or C). Write your answers on the separate answer sheet. You will listen to the text twice.

12. In what kind of atmospheres does cool air rise?
 A bad atmospheres B tropical atmospheres C space atmospheres
13. What becomes more buoyant in more humid climates?
 A heat B oxygen C rain
14. What did scientists say was lighter than dry air?
 A oxygen B CO₂ C humid air
15. What could be worse without the lightness of water vapour?
 A climate warming B floods C typhoons
16. What models did a researcher plan to study?
 A geothermal science models B global climate models C rain pattern models

TEST 7

Task 1

Listen to the speakers. For questions (1–6) choose the correct answer (A, B or C). Write your answers on the separate answer sheet. You will listen to each recording twice.

1. Who is the guest asking for advice?

A



B



C



2. The guest is interested in ...

A



B



C



3. The guest is advised to go to ...

A



B



C



4. The guests is ...

- A calling for a wireless connection
 B asking where to make a copy
 C asking for more amenities

5. He is using

- A a tablet computer B an iPad C a laptop

6. Where can copies be made?

- A in the lobby B in the computer lab C in the room

Task 2

Listen to the text. For statements (7-11) choose T if the statement is true according to the text, F if it is false. Write your answers on the separate answer sheet. You will listen to the text twice.

7. A cuckoo has completed the longest migration ever by a bird.
 8. The cuckoo flew from Zanzibar to Outer Mongolia.
 9. A total of five cuckoos were tagged and tracked by ornithologists.
 10. The ornithologists said the cuckoos' feet were like a mammoth's feet.
 11. The tagging project was done by 16 countries.

Task 3

Listen to the text. For questions (12-16) choose the correct answer (A, B or C). Write your answers on the separate answer sheet. You will listen to the text twice.

12. Who bought the raffle ticket for the woman?
 A her friend B her neighbour C her son
13. How did the woman feel when she was told she had won?
 A satisfied B frightened C astonished
14. What kind of painting did the woman win?
 A a landscape B a still life C a portrait
15. How much did an auction house value the painting at?
 A \$1.1 million B \$2.2 million C \$3.3 million
16. Who donated the painting to the charity raffle?
 A Picasso's great-granddaughter
 B an art collector
 C Christies

TEST 8

Task 1

Listen to the speakers. For questions (1-6) choose the correct answer (A, B or C). Write your answers on the separate answer sheet. You will listen to each recording twice.

1. How much does the copy cost?

A



B



C



2. What's the problem?

A



B



C



3. The guest is asking for a wake up call at

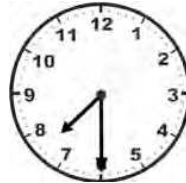
A



B



C



4. Why is he calling?

A to make a reservation

B to cancel the reservation

C to confirm the reservation

5. What is the reason for calling?

A His wife refused to go.

B His wife fell ill.

C His wife changed her mind.

6. When does the reservation begin?

A April 9th

B April 19th

C April 29th

Task 2

Listen to the text. For statements (7-11) choose T if the statement is true according to the text, F if it is false. Write your answers on the separate answer sheet. You will listen to the text twice.

- 7. Amazon's new PC game is on sale everywhere.
- 8. Experts have said Crucible could be a rival to the game Fortnite.
- 9. The game Crucible is set in the Amazon rainforest.
- 10. If gamers collect a material called essence, they can level up.
- 11. The Amazon Games' representative is sure that games help people keep in touch.

Task 3

Listen to the text. For questions (12-16) choose the correct answer (A, B, or C). Write your answers on the separate answer sheet. You will listen to the text twice.

- 12. Which of the following does Jason NOT learn in Brazilian jiu-jitsu class?
 - A weapon skills
 - B fighting
 - C self-defence
- 13. Where does Brazilian jiu-jitsu trace its roots?
 - A France
 - B Japan
 - C Brazil
- 14. Who is Mitsuyo Maeda?
 - A the inventor of judo
 - B a Japanese karate expert
 - C a Japanese martial art expert

15. What can be inferred about Helen?

- A She is interested in Brazilian jiu-jitsu.
 B She is learning martial arts.
 C She wants to meet Mitsuyo Maeda.

16. What does Jason suggest?

- A to teach Helen B to give up the idea C to observe his next jiu-jitsu class

TEST 9

Task 1

Listen to the speakers. For questions (1-6) choose the correct answer (A, B or C). Write your answers on the separate answer sheet. You will listen to each recording twice.

1. What is the client's name?

- A  B  C 

2. What card is NOT accepted at the moment?

- A  B  C 

3. What room does the guest live in?

- A  B  C 

4. What kind of vehicle does the guest want to get via the front desk?

- A a private car B a Limo C a taxi

5. Where is he going to go?

- A a shopping centre B a business centre C a sports centre

6. When can the guest leave?

- A in five minutes B in a minute C in a few seconds

Task 2

Listen to the text. For statements (7-11) choose T if the statement is true according to the text, F if it is false. Write your answers on the separate answer sheet. You will listen to the text twice.

7. It's necessary for young kids to know their name and address.
 8. Japanese family tried to teach their pet to pronounce its address.
 9. It took them ten years to tame their parrot.
 10. The parrot failed to learn its name and address.
 11. The family understood that every try is worth doing.

Task 3

Listen to the text. For questions (12–16) choose the correct answer (A, B or C). Write your answers on the separate answer sheet. You will listen to the text twice.

12. What country are Frank and Michelle travelling in?
 A Australia B New Zealand C Egypt
13. What are they planning to do?
 A to swim B to go to the beach C to windsurf
14. How long is the beach?
 A 90 miles B 50 miles C 55 miles
15. How did people get around at the time when the beach was named?
 A on foot B by horse C by ship
16. What is NOT mentioned in their conversation?
 A Auckland B Ninety Mile Beach C Miami Beach

TEST 10

Task 1

Listen to the speakers. For questions (1–6) choose the correct answer (A, B or C). Write your answers on the separate answer sheet. You will listen to each recording twice.

1. What drink does the man order?

 A

 B

 C


2. What kind of main dish does the man prefer?

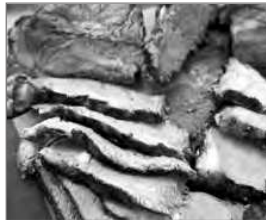
 A

 B

 C


3. What kind of beef is being ordered?

 A

 B

 C


4. The man thought the game started at
 A 10 o'clock B 12 o'clock C 2 o'clock
5. What is the woman's favourite sport?
 A soccer B tennis C basketball
6. When are they going to play a game?
 A right now B in some days C as soon as the soccer game is over

Task 2

Listen to the text. For statements (7-11) choose T if the statement is true according to the text, F if it is false. Write your answers on the separate answer sheet. You will listen to the text twice.

7. Two penguins escaped from a zoo to visit an art gallery.
 8. A zoo boss wanted the penguins to have a change of scenery.
 9. The penguins weren't used to seeing visitors every day.
 10. The zoo keeper also made the penguins go to a field.
 11. The zoo's executive director wanted the penguins to make him rich.

Task 3

Listen to the text. For questions (12-16) choose the correct answer (A, B or C). Write your answers on the separate answer sheet. You will listen to the text twice.

12. Where is the Banff National Park situated?
 A in Colorado B in Canada C in the USA
13. When was this park established?
 A in 1990 B in 1885 C in 1985
14. What sports are on top priority there?
 A skiing and snowboarding
 B skiing and tobogganing
 C snowboarding and sky diving
15. What mountain is the tallest there?
 A Mount Robson B Rocky Mountain C Banff
16. Why is one of the speakers in a hurry?
 A The weather is getting better.
 B The wind is getting stronger.
 C The friend of theirs is arriving.

CONTENTS

I. LISTENING	3
II. VOCABULARY	17
III. MASTERING YOUR VOCABULARY.....	43
IV. THEME-BASED PRACTICE TESTS	63
V. USE OF LANGUAGE COLLOCATIONS	138
VI. USE OF LANGUAGE PREPOSITIONS	148
VII. GRAMMAR	166
VIII. WRITING	256
Key Words for Writing	290
IX. COMPLEX TESTS	292
X. SYNONYMS	319
XI. IRREGULAR VERBS	322
XII. LISTS OF USEFUL VOCABULARY	327
XIII. LISTENING SCRIPT	342
XIV. ANSWERS	353